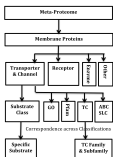


Building a FAIR Environment for a Bioinformatics Project using Machine Learning

Greg Butler and Tristan Glatard
Dept of Computer Science & Software Engineering
Concordia University, Montreal, Canada



Overview



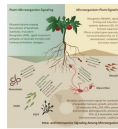
EPRCS Methodology

- Evolutionary information
- Positional information
- Regional information
- Compositional information
- Sequential information

Experiments

What is the best combination of E P R C S tools for prediction

Application

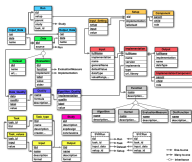


Microbiomes

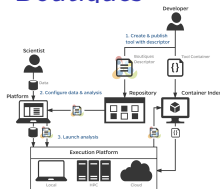
openML



openML



Boutiques



Data Sources

- UniProt
- TCDB
- GO, ChEBI, Pfam
- ABC, SLC

Findable

Zenodo, doi

Accessible

DockerHub

Interoperable

Boutiques, Galaxy, CWL

Reusable

Boutiques, openML